



TAIKO KIKAI INDUSTRIES CO., LTD.

<https://www.taiko-kk.com/en/>

209-1 Shimotabuse, Tabuse-cho, Kumage-gun, Yamaguchi 742-1598 Japan

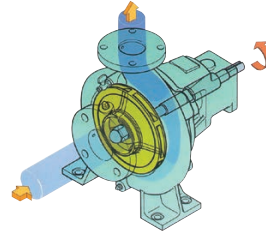
Tel : +81-820-52-3113 / Fax : +81-820-53-1001 / E-mail : business-marine@taiko-kk.com

AHTS	PSV	FPSO	Drill Ship	Semi-sub

Product

Centrifugal Pump

TAIKO's centrifugal pumps convey fluids with centrifugal force using the revolution of the impeller installed inside the pump casing. Centrifugal pumps have long been known as water pumps, and our products have been used as cargo handling pumps and ballast pumps for ships, as well as for conveying fresh water, sea water, oil, and liquid chemicals.



Deepwell Centrifugal Pump

MTDPD

- Capacity : 20-500m³/h
- Max. dis. Press. : 125m
- Application : Oil, Chemical



Tank Mounted Centrifugal Pump

C1T・C2T

- Capacity : 80-1700m³/h
- Max. dis. Press. : 1.0MPa
- Application : LO



Tank Mounted Centrifugal Pump

DVC

- Capacity : 6-400m³/h
- Max. dis. Press. : 2.4MPa
- Application : LO



Control System

Energy Saving Inverter Control System



Pressure Tank

Pressure Tank

UH

- Capacity : 500-2000L



Centrifugal Pump

Vertical Centrifugal Pump

EMC

- Capacity : 30-600m³/h
- Max. dis. Press. : 35m



Vertical Centrifugal Pump

ESD

- Capacity : 500-2800m³/h
- Max. dis. Press. : 35m



Horizontal Centrifugal Pump

TMC

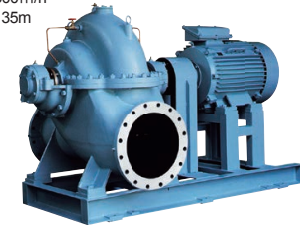
- Capacity : 10-150m³/h
- Max. dis. Press. : 50m



Horizontal Centrifugal Pump

HD

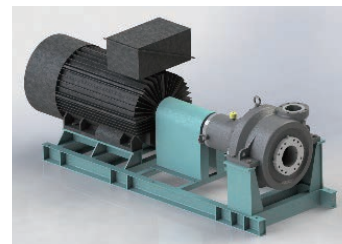
- Capacity : 300-1500m³/h
- Max. dis. Press. : 35m



Centrifugal Pump for Mud

LMP

- Capacity : 330-520m³/h
- Max. dis. Press. : 60m
- Application : High density, Slurry, Mud



Service Network



Reference

TAIKO have experience for Engine room Pumps for all kind of commercial and offshore vessels.